

EDITORIAL

Acupuncture: The Search for Biologic Evidence with Functional Magnetic Resonance Imaging and Positron Emission Tomography Techniques

ZANG-HEE CHO, Ph.D.,¹ TERRENCE DALE OLESON, Ph.D.,² DAVID ALIMI, M.D.,³
and RICHARD C. NIEMTZOW, M.D., Ph.D., M.P.H.⁴

The subject of acupuncture is surrounded, in some circles, with notions of mysticism and movements of energy through meridian channels invisible to the naked eye and a nomenclature for the internal organs that perplexes many Western-trained scientists confronted with the Chinese literature. While a large number of randomized controlled trials provides growing evidence of the clinical efficacy of acupuncture for treating a variety of medical conditions (National Institutes of Health, 1997; Ernst and White, 1999; Stux and Hamerschlag, 2001) a reliance on apparently unverifiable concepts of energy gives rise to considerable skepticism of this alternative medical modality. Anecdotal reports of patient improvement may be sufficient to persuade the health care consumer but failure to completely demonstrate the relationship of Oriental Medicine to known physiologic systems limits the acceptance of acupuncture in mainstream medicine.

Physicians who practice medical acupuncture often provide considerable benefit to patients who have reportedly "failed" to respond to contemporary Western medicine. Thus, these physicians appreciate the enormous clin-

ical value of acupuncture. Nonetheless, historical accounts in Europe and America of such supposedly effective medical cures as "blood-letting" and "mysterious elixirs" led Western physicians to doubt medical procedures not grounded in well-researched, biologic mechanisms and continue to fuel Western cynicism toward Oriental Medicine. However, advances in sophisticated technology utilized in the fields of neuroscience and molecular biology have the potential to lead to greater understanding of the mechanisms underlying the effects of acupuncture.

In their paper "A Pilot Study of Functional Magnetic Resonance Imaging of the Brain During Manual and Electroacupuncture Stimulation of Acupuncture Point (LI-4 Hegu) in Normal Subjects Reveals Differential Brain Activation Between Methods" (pages 411-419), Jian Kong et al. demonstrate the complexity of researching even the basic process of needling a major acupuncture point, Large Intestine 4 (LI 4). Nevertheless, their endeavor to explore the centrally mediated effects of acupuncture using functional magnetic resonance (fMRI) brain imaging techniques takes advantage of an opportunity that Chinese doctors from the past

¹University of California, Irvine, Irvine, CA.

²American University for Complementary Medicine, Los Angeles, CA.

³Auricular Acupuncture Department of Faculty of Medicine of Paris XIII. Researcher at Gustave Roussy Institute Hospital, France.

⁴Malcolm Grow U.S. Air Force Medical Center, Andrews Air Force Base, Washington, DC.

could never have imagined. Their belief in the complementary interaction of *yin* and *yang* and their efforts to harmonize the *qi* of the patient may well be metaphorical explanations for fundamental physical processes that we are only now beginning to observe in medical research laboratories. The availability of the technology developed for brain imaging in the neurosciences (Cho et al., 1976; Cho et al., 2002; Toga and Mazziotta, 2000) may begin to resolve contentious discussions regarding such questions as: "Is acupuncture real or simply a placebo effect?"; "If it is real, is acupuncture really point specific?"; and "How does it work?" Cho et al. (1998; 2001) demonstrate selective changes in cortical fMRI following needling at acupuncture points. Stimulation of specific acupoints on the Bladder meridian or on the Gall Bladder meridian in the lower extremities led to differential fMRI changes in the brain. More recent research by Alimi et al (2002) demonstrates that needle stimulation of the auricular acupuncture point for the hand leads to selective fMRI changes in the somatosensory region of the postcentral gyrus that responds to stimulation of the actual hand.

The point specificity of acupuncture stimulation, however, is not entirely supported (Cho et al., 2002, unpublished, ongoing research). Sham

acupuncture stimulation of nonacupuncture points leads to a reduction of fMRI activation in the same brain areas that are affected by needling acupuncture points defined by the traditional acupuncture meridians. Both acupuncture stimulation and sham needling reduce activation in the brain areas that are involved in pain perception, including the somatosensory thalamus, the anterior cingulate gyrus, and the premotor cortex. These findings may provide scientific support for the neurobiologic bases of acupuncture analgesia and for the clinical rationale for treating chronic pain with acupuncture.

Ongoing neuroscience-based studies in other areas of clinical medicine suggest that it is time to launch a major systematic study of the neural bases of acupuncture utilizing fMRI and PET technologies. Such neurobiologic evidence may provide the sort of scientific evidence that will encourage more physicians to incorporate acupuncture into standard practice, whether or not they concur with the energetic concepts used in Oriental medicine. The same Western medical community (that largely still suspects that acupuncture is scientifically ungrounded) is already incorporating more acupuncture into practice.

Finally, a presentation of currently ongoing research endeavors in Dr. Cho's laboratory that are

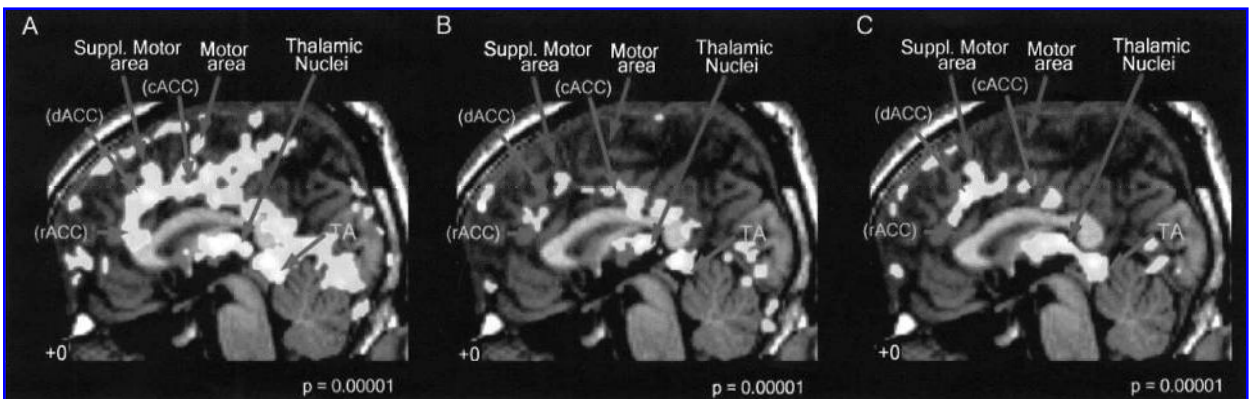


FIG. 1. Comparison of the cortical activations of the three sets of experiments, namely the activations observed as a result of: (A) "Pain" stimulation (alone); (B) "Meridian-Acupuncture + Pain" stimulation; and (C) "Sham-Acupuncture + Pain" stimulation, respectively. Note the markedly decreased activations in (B) and (C) compared to (A), especially in the anterior cingulate cortex (dACC, cACC, and rACC), the supplementary motor areas, and the thalamic areas. This result implies that those cortical centers are involved in pain "perception," attention "riveting," "modulation," and "relay." In both (B) and (C), the only areas that remain activated are the much-reduced supplementary motor and primary motor areas (Magistretti PJ, Pellerin L. Cellular bases of brain energy metabolism and their relevance to functional brain imaging: Evidence for a prominent role of astrocytes. *Cereb Cortex* 1996;6:50-61). Note also that the pineal gland and tectal areas are also decreased substantially with acupuncture stimulation. dACC, dorsal anterior cingulate cortex; rACC, rostral anterior cingulate cortex; cACC, caudal anterior cingulate cortex; PG, pineal gland; TA, tectal area.

related to fMRI activity and acupuncture is shown in Figure 1. Data obtained by fMRI following "Pain Stimulation," "Meridian-Acupuncture + Pain," and "Sham-Acupuncture + Pain" is shown. These sagittal images demonstrate clear differences between pure pain stimulation to that of the acupuncture modulated-pain responses by either traditional meridian-based acupuncture needling and by acupuncture needling at sham points.

REFERENCES

- Alimi D, Geissmann A, Gardeur D. Auricular acupuncture stimulation measured on functional magnetic resonance imaging. *Med Acupunct* 2002;13:18-21.
- Cho ZH, Chan JK, Erickson L. Circular ring transverse axial positron camera for 3-D reconstruction of radionuclides distribution. *IEEE Trans Nucl Sci* 1976;23:613-622.
- Cho ZH, Chung SC, Jones JP, Park JB, Park HJ, Lee HJ, Wong EK, Min BI. Findings of the correlation between acupoints and corresponding brain cortices using functional MRI. *Proc Natl Acad Sci USA* 1998;95(5):2670-2673.
- Cho ZH, Fallon J, Wong EK. *Neuro-Acupuncture, Vol. I: Basic Neuroscience*. Los Angeles: Q-Puncture, 2001.
- Cho ZH, Young-Don Son, Jae-Yong Han, E.K. Wong, Chang-Ki Kang, Kyoung-Yo Kim, and Ki-Hyon Kim. fMRI Neurophysiological evidence of acupuncture mechanisms. *J Med Acupunct* 2002; in press.
- Ernst E, White A, eds. *Acupuncture—A Scientific Appraisal*. Oxford: Butterworth-Heinemann; 1999.
- National Institutes of Health. Question 1. NIH Consensus Development Statement on Complementary Medicine, 1997. Online document at: odp.od.nih.gov/consensus/statements/cdc/107/107stmt.html 1997.
- Stux G, Hammerschlag R, eds. *Clinical Acupuncture*. Heidelberg and Berlin, Germany: Springer-Verlag; 2001.
- Toga A, Mazziotta, J, eds. *Brain Mapping: the Systems*. San Diego: Academic Press; 2000.

Address reprint requests to:

Zang-Hee Cho, Ph.D.

Medical Science, Room B140B

Department of Radiological Sciences

University of California, Irvine

Irvine, CA 92697-5000

E-mail: zcho@uci.edu

This article has been cited by:

1. Ronald Kulich, Raymond Maciewicz, Steven J. Scrivani. 2009. Functional Magnetic Resonance Imaging (fMRI) and Expert Testimony. *Pain Medicine* **10**:2, 373-380. [[CrossRef](#)]
2. Rupali P. Dhond , Thomas Witzel , Matti Hämäläinen , Norman Kettner , Vitaly Napadow . 2008. Spatiotemporal Mapping the Neural Correlates of Acupuncture with MEG. *The Journal of Alternative and Complementary Medicine* **14**:6, 679-688. [[Abstract](#)] [[PDF](#)] [[PDF Plus](#)]
3. Lin Li , Hua Liu , Yong-Zhong Li , Jian-Yang Xu , Bao-Ci Shan , Dan Gong , Kun-Cheng Li , Xiao-Wei Tang . 2008. The Human Brain Response to Acupuncture on Same-Meridian Acupoints: Evidence from an fMRI Study. *The Journal of Alternative and Complementary Medicine* **14**:6, 673-678. [[Abstract](#)] [[PDF](#)] [[PDF Plus](#)]
4. D. Pyne, N. G. Shenker. 2008. Demystifying acupuncture. *Rheumatology* **47**:8, 1132-1136. [[CrossRef](#)]
5. Rupali P. Dhond , Norman Kettner , Vitaly Napadow . 2007. Neuroimaging Acupuncture Effects in the Human Brain. *The Journal of Alternative and Complementary Medicine* **13**:6, 603-616. [[Abstract](#)] [[PDF](#)] [[PDF Plus](#)]
6. Tsung-Jung Ho , Jeng-Ren Duann , Wu-Chung Shen , Jaung-Geng Lin . 2007. Needling Sensation: Explanation of Incongruent Conclusion Drawn from Acupuncture fMRI Study. *The Journal of Alternative and Complementary Medicine* **13**:1, 13-14. [[Citation](#)] [[PDF](#)] [[PDF Plus](#)]
7. Andrea Guala , Daniel Oberle , Mac Ramos . 2007. Efficacy and Safety of Two Baby Creams in Children with Diaper Dermatitis: Results of a Postmarketing Surveillance Study. *The Journal of Alternative and Complementary Medicine* **13**:1, 16-18. [[Citation](#)] [[PDF](#)] [[PDF Plus](#)]
8. Chunxiao Wang , Zhiqiang Xiong , Chunyu Deng , Wei Yu , Weitao Ma . 2007. Miniscalpel-Needle Versus Triggerpoint Injection for Cervical Myofascial Pain Syndrome: A Randomized Comparative Trial. *The Journal of Alternative and Complementary Medicine* **13**:1, 14-16. [[Citation](#)] [[PDF](#)] [[PDF Plus](#)]
9. Z. H. Cho, S. C. Hwang, E. K. Wong, Y. D. Son, C. K. Kang, T. S. Park, S. J. Bai, Y. B. Kim, Y. B. Lee, K. K. Sung, B. H. Lee, L. A. Shepp, K. T. Min. 2006. Neural substrates, experimental evidences and functional hypothesis of acupuncture mechanisms. *Acta Neurologica Scandinavica* **113**:6, 370-377. [[CrossRef](#)]
10. Grigory V. Chernyak, Daniel I. Sessler. 2005. Perioperative Acupuncture and Related Techniques. *Anesthesiology* **102**:5, 1031-1049. [[CrossRef](#)]
11. Zang-Hee Cho, Young-Don Son, Chang-Ki Kang, Jae-Yong Han, Edward K. Wong, Sun-Joon Bai. 2003. Pain dynamics observed by functional magnetic resonance imaging: Differential regression analysis technique. *Journal of Magnetic Resonance Imaging* **18**:3, 273-283. [[CrossRef](#)]
12. 2003. Current Awareness in NMR in Biomedicine. *NMR in Biomedicine* **16**:2, 112-121. [[CrossRef](#)]
13. 2002. Literature Watch. *Alternative and Complementary Therapies* **8**:5, 313-314. [[Citation](#)] [[PDF](#)] [[PDF Plus](#)]